

# Getinge HS33

## Article List

**GETINGE**  
GETINGE GROUP

### General Specification



#### Floor-standing steam sterilizer with 60 (1 STU) or 100 (1.5 STU) liters capacity

- Integrated printer, mounted on loading side.
- 8,5" color touchdisplay Avanti.
- Rack 6011000050 (HS33 100-liters) resp. 483758470 (HS33 60-liters).
- Perforated aluminum tray 6011000233 resp. 483758670.
- Ejector system, effectively removing the air from the chamber.\*

For more information, see [www.quadro.getinge.com](http://www.quadro.getinge.com) and [www.getinge.com](http://www.getinge.com)  
Program combinations and further specifications, see separate product specification.  
Subject to change without notice.

#### Getinge HS33 60-liters - Single manual door

Manual vertically opened door.

Ejector system 50 Hz (standard)	Art. no 6011978043214
Ejector system 60 Hz	Art. no 6011978043224
Water saving module 50/60 Hz**	Art. no 6011978043234

#### Getinge HS33 60-liters - Single automatic door

Automatic vertically opened door, controlled by compressed air (compressed air needed).

Ejector system 50 Hz (standard)	Art. no 6011978044214
Ejector system 60 Hz	Art. no 6011978044224
Water saving module 50/60 Hz**	Art. no 6011978044234

#### Getinge HS33 60-liters - Double automatic door

Automatic vertically opened doors, loading and unloading side, controlled by compressed air (compressed air needed). Classic display on unloading side.

Ejector system 50 Hz (standard)	Art. no 6011978045214
Ejector system 60 Hz	Art. no 6011978045224
Water saving module 50/60 Hz**	Art. no 6011978045234

#### Getinge HS33 100-liters

Added to the general specification, Getinge HS33 100-liters is as standard equipped with a manual vertically opened door.

Ejector system 50 Hz (standard)	Art. no 6011978047214
Ejector system 60 Hz	Art. no 6011978047224
Water saving module 50/60 Hz**	Art. no 6011978047234

\* Ejector system. A highly efficient ventury vacuum system, designed for quiet operation, effectively removing the air from the chamber. The ventury is fed with water by a three phase circulation pump. The effect of the pump is 550 W.

\*\* Water saver module. For the creation of vacuum in the sterilization process, the water saver module replaces the standard ejector module. The module consists of a unique water ring pump, which saves 80-95 % of the water consumption, i.e. 5-15 liters per process depending on sterilizer load.

---

## Factory Installations

---



### Getinge Log LAN

Art. no 6011000327

In the Getinge Log LAN version, the process data is transferred to a PC via the practice network and there it is filed in a database in encrypted form. The data can additionally be stored as a secure PDF. To be used together with 48320507.

---



### Getinge Log USB

Art. no 6011000326

If no network connection available, with Getinge Log USB, the data can be stored on the USB stick and transferred to the PC. The transfer can take place after each machine operation or at the end of a work day. To be used together with 48320507.

---

No picture

### RS232 connection

Art. no 48320507

Serial data communication.

---



### USB process documentation unit (only for HS33 60-liters)

Art. no 6011000178

The system receives available process data and stores the information as a PDF file on the USB stick. Built-in NetCom, USB in front panel. To be used together with 48326134.

---

No picture

### Process release system (only for HS33 60-liters)

Art. no 6011000179

Built-in process release procedure. Built-in NetCom. To be used together with 48326134.

---

No picture

### LAN connection license

Art. no 48326134

Process data storage via Ethernet on clinic computer. Easy to install via web page. To be used together with 6011000178 or 6011000179.

---



### Label printer (only for HS33 60-liters)

Art. no 4836383

Zebra printer for process release system. To be used together with 6011000179.

---



### Reverse osmosis kit c50ep

Art. no 6011000263

Including connection kit, for assembly on site!

---



### Built-in air compressor

For automatic door solution, in clinics where compressed air is not available. The compressor is serving the door opening and closing function with air and is built-in into the sterilizer cabinet next to the water treatment system.

Built-in air compressor for 50 Hz

Art. no 6011000213

Built-in air compressor for 60 Hz

Art. no 6011000214

---



### Service access

Art. no 4839863

Set of wheels to be mounted on the sterilizer to simplify service. The sterilizer is easier to move from its installation position. The wheels are replacing the standard feet.

---



### Wall connection

Art. no 6011000188

Stainless steel frame to be mounted around the sterilizer when built-in in a wall. Covering the gap between sterilizer and wall. Width 88 mm.

---

---

## Accessories

---



### Loading trolley

Loading trolley, which can be docked to the sterilizer door handle on manual door and a docking device on automatic doors. On the loading trolley a tray on rollers can be placed, which facilitates the movement of the load into/out of the sterilizer.

Loading trolley for 100-liters

Art. no 564710372

Loading trolley for 60-liters

Art. no 564710370

---



### Tray with rollers, perforated

Perforated stainless steel tray with rollers that simplifies the loading and unloading of the sterilizer.

To be used together with the loading trolley and the rack without levels.

Tray for 100-liters, dimensions: 960 x 312 x 35 mm

Art. no 6011000237

Tray for 60- or 100-liters, dimensions: 612 x 312 x 35 mm

Art. no 483766570

---



### Rack on wheels

Stainless steel rack with three levels for trays 483229401 or 483229402.

To be used together with the loading trolley and the rack without levels.

Rack for 100-liters

Art. no 6011000229

Rack for 60- or 100-liters

Art. no 48320429

---



### Rack on wheels for 18 dental trays for 60- and 100-liters

Art. no 48320428

Stainless steel rack for 18 trays (287 x 186 x 19/38 mm).

To be used together with the loading trolley and the rack without levels

---

No picture

### Rack without levels

Rack without levels, aluminum.

Rack for 100-liters

Art. no 6011000317

Rack for 60-liters

Art. no 48320184

---



### Fixed rack (Included at delivery of the sterilizer)

Fixed aluminum rack with three levels. Space between the shelves in the middle section is 96 mm and in the outer section 92 mm.

Rack for 100-liters  
dimensioned for the trays 6011000233 and -232

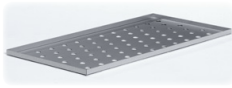
Art. no 6011000050

Rack for 60-liters  
dimensioned for the trays 483758670 and -671

Art. no 483758470

---

## Accessories (continued)



### Tray, perforated

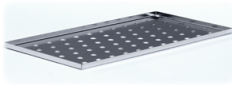
Perforated aluminum tray for the fixed aluminum rack (6011000050/483758470).

Tray for 100-liters, dimensions: 958 x 308 x 15 mm

Art. no 6011000233

Tray for 60- or 100-liters, dimensions: 603 x 308 x 15 mm

Art. no 483758670



### Tray, perforated

Perforated stainless steel tray for the fixed aluminum rack (6011000050/483758470).

Tray for 100-liters, dimensions: 958 x 308 x 15 mm

Art. no 6011000232

Tray for 60- or 100-liters, dimensions: 603 x 308 x 15 mm

Art. no 483758671



### Tray, perforated

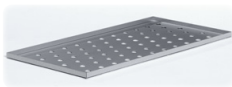
Perforated stainless steel tray for the stainless steel rack (6011000229/48320429).

Tray for 100-liters, dimensions: 958 x 297 x 15 mm

Art. no 6011000239

Tray for 60- or 100-liters, dimensions: 603 x 297 x 15 mm

Art. no 483758673



### Tray, perforated

Perforated aluminum tray for the stainless steel rack (6011000229/48320429).

Tray for 100-liters, dimensions: 958 x 293 x 15 mm

Art. no 6011000235

Tray for 60- or 100-liters, dimensions: 583 x 293 x 15 mm

Art. no 483229401



### Tray, perforated

Perforated stainless steel tray for the stainless steel rack (6011000229/48320429).

Tray for 100-liters, dimensions: 958 x 293 x 15 mm

Art. no 6011000234

Tray for 60- or 100-liters, dimensions: 583 x 293 x 15 mm

Art. no 483229402



### Instrument tray

Stainless instrument tray.

Instrument tray SPRI II, dimensions 340 x 250 x 70 mm

Art. no 466309201

Instrument tray SPRI III, dimensions 250 x 170 x 70 mm

Art. no 466309101



### Baskets

Stainless baskets preferably used together with the tray with rollers.

Basket, dimensions 295 x 295 x 190 mm

Art. no 6011000045

Basket, dimensions 590 x 300 x 190 mm

Art. no 483703770

Basket, dimensions 590 x 300 x 100 mm

Art. no 483703771

---

## Consumables

---

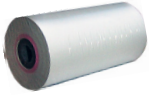


### Filter set for reverse osmosis system

Art. no 6011000301

Filter set for reverse osmosis system c50ep (Art. no 6011000263). Annual service kit including one carbon block filter, one sediment cartridge, one ion-exchange cartridge and one special lubricant for o-rings.

---



### Paper for Martel printer

Art. no 4836098

Thermal paper. Achievability 15 years according to certificate if stored according to specification ( $23 \pm 5$  °C in  $50 \pm 10\%$  atmospheric humidity, dark, and no mechanical influence). Delivered in package of one roll.

---

## Service Equipment

---



### Absolute manometer, 1/4" connection

Art. no 4839420

Digital absolute pressure manometer for the calibration of the sterilizer pressure transducers. Including a kit of couplings for adoption to most sterilizers.

---



### Test instrument for tap water quality

Art. no 4835661

To check the water quality for steam generation (0 to 99  $\mu$ S).

---



### Test instrument for tap water quality

Art. no 4836004

To check the tap water quality (10 to 1,000  $\mu$ S).

---



### Thermo instrument (for measuring steam generator temperature)

Art. no 4835967

To be put into the measurement hole on the front side of the sterilizer.

---

---

**GETINGE**  
GETINGE GROUP

Getinge Infection Control AB  
P O Box 69  
305 05 Getinge, Sweden  
Phone: +46 (0)10 335 00 00  
info@getinge.com  
www.getinge.com

---

**GETINGE GROUP**

Getinge Group is a leading global provider of products and systems that contribute to quality enhancement and cost efficiency within healthcare and life sciences. We operate under the three brands of ArjoHuntleigh, Getinge and Maquet.

---